

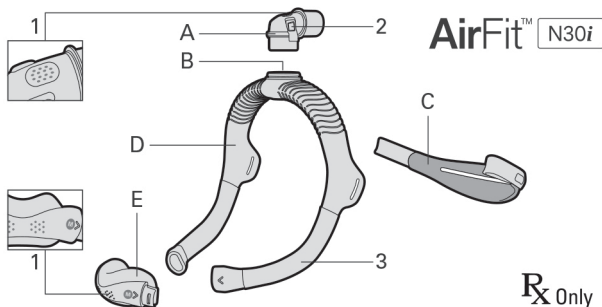


AirFit™ N30i

USER GUIDE



Nasal cradle
mask



- | | | | |
|---|------------|---|-----------------------------|
| A | Elbow | E | Cushion |
| B | Elbow ring | 1 | Vent (in cushion and elbow) |
| C | Headgear | 2 | Side buttons |
| D | Frame | 3 | Sleeve |

Intended use

The AirFit N30i mask is intended to be used by patients weighing more than 66 lb (30 kg) who have been prescribed non-invasive positive airway pressure (PAP) therapy such as CPAP or bi-level therapy. The mask is intended for single patient re-use in the home and multi-patient re-use in the hospital/institutional environment.

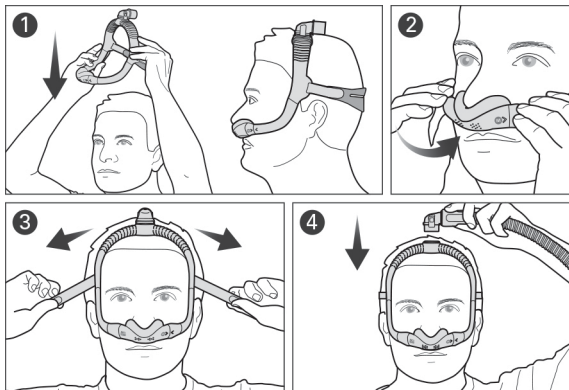
Please read the entire guide before use.

Before using your mask

Remove all packaging and inspect each mask component for visible deterioration.

Use the fitting template to assist in selecting the right size cushion and frame.

Fitting your mask



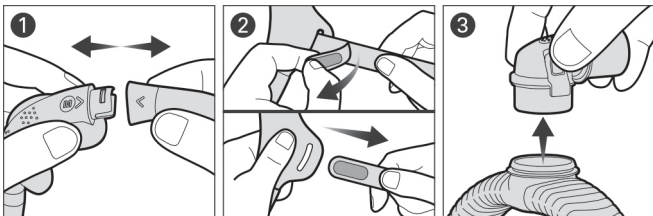
1. Pull the frame and headgear over your head until the elbow is positioned on top and the headgear is behind your head.
2. Place the cushion under your nose.
3. Tighten or loosen the headgear until the cushion fits comfortably under your nose.
4. Squeeze the side buttons on the elbow and detach from the frame. Connect the air tubing from your device to the elbow, then reattach to the frame.

Adjusting your mask

- When using the mask, air will flow out of the vents in the cushion and elbow. If air leaks from the side or top of the cushion, adjust the mask fitting to improve the seal.
- You can position the top of the frame forward or backwards over your head until the mask feels comfortable.

Disassembling your mask for cleaning

If your mask is connected to a device, disconnect the device air tubing from the mask elbow.



1. Pull the cushion from the frame.
2. Undo the fastening tabs on the headgear strap and pull it from the frame.
3. Squeeze the side buttons on the elbow and detach from the frame.

Cleaning your mask

After each use: Cushion

Weekly: Headgear, frame and elbow

1. Soak the components in warm water with a mild liquid detergent. Ensure that there are no air bubbles while soaking.
2. Hand wash the components with a soft bristle brush. Pay particular attention to the vent holes.
3. Thoroughly rinse the components under running water.
4. For the frame sleeves, squeeze with a clean towel to remove excess water. Leave the components to air dry out of direct sunlight.

If the mask components are not visibly clean, repeat the cleaning steps.

Reassembling your mask

1. Connect the elbow into the top of the frame until it clicks.
2. Insert the headgear strap into the frame and fold the fastening tabs backwards.
3. Insert the ends of the frame into the cushion, ensuring that the arrows on the cushion and frame are aligned.

Note: If the elbow ring detaches, re-insert into the top of the frame.

WARNING

- The mask is not suitable for patients requiring life support ventilation.
- To avoid affecting the safety and quality of therapy, the mask vents must be kept clear to protect against rebreathing. Regularly inspect the vents to ensure they are kept clean, undamaged and clear of blockages.
- The mask must be used under qualified supervision for patients who are unable to remove the mask by themselves. The mask may not be suitable for those prone to aspiration.
- Regularly clean your mask to maintain the quality of your mask and to prevent the growth of germs that can adversely affect your health.
- Visual criteria for product inspection: If there is any visible deterioration of a mask component (cracking, crazing, tears etc.), the component should be discarded and replaced.
- Only use compatible CPAP or bi-level therapy devices. The technical specifications of the mask are provided for healthcare professionals to determine compatible devices. Use with incompatible devices may affect the performance or safety of the mask.
- Discontinue using the mask if you have ANY adverse reaction and consult your physician or sleep therapist.
- The AirFit N30i nasal CPAP mask is not intended to be used simultaneously with nebulizer medications that are in the air path of the mask/tube.

CAUTION

- Remove all packaging before using the mask.
- Using a mask may cause tooth, gum or jaw soreness or aggravate an existing dental condition. If symptoms occur, consult your physician or dentist.
- When fitting the mask, do not overtighten the headgear as this may lead to skin redness or sores around the mask cushion.
- The mask should not be used unless the device is turned on. Once the mask is fitted, ensure the device is blowing air to reduce risk of rebreathing exhaled air.
- As with all masks, some rebreathing may occur at low pressures.
- Always follow cleaning instructions and only use a mild liquid detergent. Some cleaning products may damage the mask, its parts and their function, or leave harmful residual vapours. Do not use a dish washer or washing machine to clean the mask.
- Do not iron the headgear as the material is heat sensitive and will be damaged.

Technical specifications

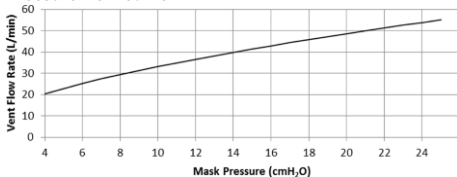
Mask setting options

For AirSense, AirCurve or S9: Select 'Pillows'.

Compatible devices

For a full list of compatible devices for this mask, see the Mask/Device Compatibility List at ResMed.com/downloads/masks.

Pressure-flow curve:



Pressure (cm H ₂ O)	Flow (L/min)
4	20
9	31
15	41
20	49
25	55

Therapy pressure: 4 to 25 cm H₂O

Resistance

Drop in pressure measured (nominal) at 50 L/min: 0.4 cm H₂O

Drop in pressure measured (nominal) at 100 L/min: 1.7 cm H₂O

Sound: Declared dual-number noise emission values in accordance with ISO4871:1996 and ISO3744:2010. A-weighted sound power level is 24 dBA, with uncertainty of 3 dBA
A-weighted pressure level at a distance of 1 m is 17 dBA, with uncertainty of 3 dBA

Environmental conditions

Operating temperature: 41°F to 104°F (5°C to 40°C)

Operating humidity: 15% to 95% non-condensing

Storage and transport temperature: -4°F to 140°F (-20°C to +60°C)

Storage and transport humidity: up to 95% non-condensing

Service life

The service life of the AirFit N30i mask system is dependent on the intensity of usage, maintenance, and environmental conditions to which the mask is used or stored. As this mask system and its components are modular in nature, it is recommended that the user maintain and inspect it on a regular basis, and replace the mask system or any components if deemed necessary or according to the 'Visual criteria for product inspection' in the 'Warning' section of this guide.

Notes:

- This product is not made with PVC or phthalates such as DEHP, DBP or BBP.
- This product is not made with natural rubber latex.
- The manufacturer reserves the right to change these specifications without notice.

Storage

Ensure that the mask is thoroughly clean and dry before storing it for any length of time. Store the mask in a dry place out of direct sunlight.

Disposal

This mask does not contain any hazardous substances and may be disposed of with your normal household refuse.

Reprocessing the mask between patients

Only Sleep Lab Mask (SLM) variants of the AirFit N30i mask system are intended for multi-patient re-use. When using between patients, these masks must be reprocessed according to cleaning and disinfection instructions available on [ResMed.com/downloads/masks](https://www.resmed.com/downloads/masks).

Symbols

The following symbols may appear on your product or packaging:



Nasal cradle mask

Nasal cradle mask



Device Setting Pillows

Device setting - Pillows



Cushion size - small



Cushion size - medium



Cushion size - wide



Cushion size - small wide



STANDARD FRAME

Standard frame



SMALL FRAME

Small frame



Caution, consult accompanying documents



Indicates a Warning or Caution and alerts you to a possible injury or explains special measures for the safe and effective use of the device

Rx Only

Prescription only (In the US, Federal law restricts these devices to sale by or on the order of a physician.)

See symbols glossary at [ResMed.com/symbols](https://www.resmed.com/symbols).

Limited warranty

ResMed Ltd (ResMed) warrants that your ResMed mask system (including mask frame, cushion, headgear and elbow) will be free from defects in material and workmanship from the date of purchase for 90 days, or in the case of disposable masks and disposable mask components for 7 days. This warranty is only available to the initial consumer. It is not transferable. If the product fails under conditions of normal use, ResMed will repair or replace, at its option, the defective product or any of its components. This limited warranty does not cover: a) any damage caused as a result of improper use, abuse, modification or alteration of the product; b) repairs carried out by any service organization that has not been expressly authorized by ResMed to perform such repairs; and c) any damage or contamination due to cigarette, pipe, cigar or other smoke. Warranty is void on product sold, or resold, outside the region of original purchase.

Warranty claims on defective product must be made by the initial consumer at the point of purchase.

This warranty replaces all other expressed or implied warranties, including any implied warranty of merchantability or fitness for a particular purpose. Some regions or states do not allow limitations on how long an implied warranty lasts, so the above limitation may not apply to you.

ResMed will not be responsible for any incidental or consequential damages claimed to have resulted from the sale, installation or use of any ResMed product. Some regions or states do not allow the exclusion or limitation of incidental or consequential damages, so the above limitation may not apply to you. This warranty gives you specific legal rights, and you may also have other rights which vary from region to region. For further information on your warranty rights, contact your local ResMed dealer or ResMed office.



ResMed Ltd

1 Elizabeth Macarthur Drive
Bella Vista NSW 2153 Australia

MANUFACTURER

See ResMed.com for other ResMed locations worldwide. AirFit, AirSense, AirCurve and S9 are trademarks and/or registered trademarks of the ResMed family of companies. For patent and other intellectual property information, see ResMed.com/ip. © 2018 ResMed Ltd. 638145/1 2018-06

ResMed.com



638145